

Rosa Elvira

Peru

Vals

Carlos A. Saco

The musical score for "Rosa Elvira" is written in 3/4 time. It consists of a single melodic line with guitar chords indicated above the staff. The score is divided into measures, with some measures containing repeat signs. The chords are as follows:

- Measures 1-4: G7, C6, Em, Dm
- Measures 5-8: G7, C6, G7
- Measures 9-12: C6, D7, G
- Measures 13-16: D7, G, G7 (first ending)
- Measures 17-20: Gb7b5, F7M, Fm6, C (second ending)
- Measures 21-24: Eb°, Dm7, G7, C6, C7⁹
- Measures 25-28: F#m7b5, Fm6, C/E, Eb°, Dm
- Measures 29-32: G7, C, C7 (first ending), C7 (second ending), F, E7#5

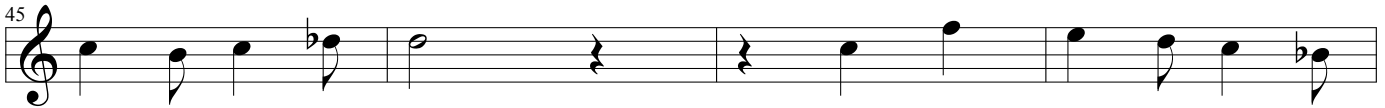
E \flat 7 D7 Gm C7



F $^{\circ}$ C7/G F



D7 9 /A Gm Am7 A \flat 7 9



Gm7 C7

1
F

 C7

2
F
F \sharp 7



G7 Dm G7



C B \flat 9 B9 C9

